



TSB - CAS06

Models applicable > Case 364 to > 885 series and 3200 industrial
Case/Manitou > P range

Details > with 280mm (Split>Torque) cover assembly
Ag Clutch Part Numbers > AGTB6021 and AGTB6021-HD used in conjunction with 128 1001 CA

THRUST BEARING ASSEMBLY UPGRADE

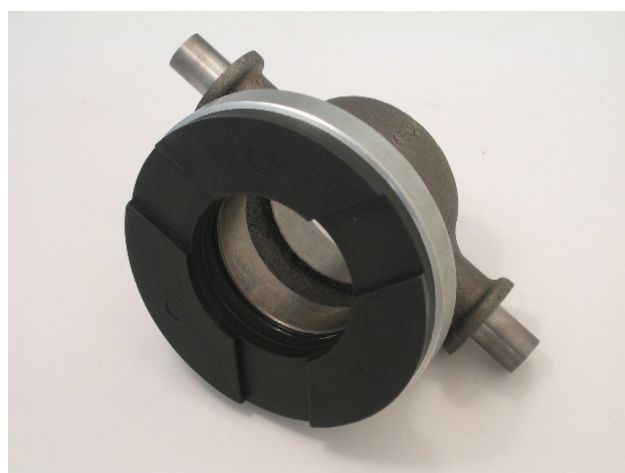
Ag Clutch has available the following heavy duty version thrust bearing with heat shield to suit the above applications.

Original Bearing & Carrier



AGTB6021

Heavy Duty Bearing & Sleeve



AGTB6021-HD

The original bearing assembly used in these models can be subjected to very long spinning cycles, dramatically increasing the amount of heat generated through the bearing.

This also increases lever wear at the contact point and ultimately results in premature bearing and/or cover failure.

The upgraded version listed has been specially designed and incorporates a heat shield which significantly reduces heat build up and lever wear resulting in prolonged clutch life

LEADING BRANDS



australianclutch.com.au

1800 CLUTCH (258824)